

An innovative concept yields the possibility to answer an array of questions in diverse fields of science. With GeoWiD you found your one-stop partner for

### Geosciences

#### Environment

#### Scientific Diving

#### Special equipment

Our clients belong to different working domains, including consulting engineers, universities and research institutes, public institutions and mining companies. We would be glad to welcome you also as our partner on scientific work.

Please take your time to fully explore all our policies and services available here and on our website [www.geowid.com](http://www.geowid.com).

**GeoWiD GmbH**  
Zuger Straße 52  
09599 Freiberg  
Germany

**CEO**  
Richard Stanulla, M.Sc.

**trade register**  
Amtsgericht Chemnitz  
HRB 31865

**Tel.**  
+49 (0) 3731 - 259 60 66  
+49 (0) 3731 - 259 61 32  
**Fax**  
+49 (0) 3731 - 259 61 39

**Cell**  
+49 (0) 170 - 383 78 00

**Web**  
[www.geowid.de](http://www.geowid.de)

**e-Mail**  
[info@geowid.de](mailto:info@geowid.de)

#### The Company

GeoWiD is a young and highly motivated company, which deals with geoscientific questions in both, terrestrial and marine environments. Our team consists of graduate geologists, geocologists and bioscientists, all certified CMAS International Scientific Divers. We provide competence in a variety of geoscientific fields and aim to give you qualified answers concerning your underwater questions. Our flexible concept offers a range of opportunities to find new approaches to problem solving.

Call us or send an e-mail – we are looking forward to advise you and to provide a tailor made quotation to best suit your project needs.



## Range of competence

### Geology

#### Sampling of

- undisturbed and disturbed **sediment** samples for varying questions such as grain size or chemical analyses (e.g. contaminated sites)
- **hard rock** (near-surface: up to 1m) for petrological and geotechnical analysis
- **water and gas** for chemical analyses (water quality and characterisation)

**Mapping and documentation** of geological outcrops, especially:

- **slope** mapping
- **topography/morphology**
- investigation of **drilling cores** (lithology, petrology, stratigraphy, borehole-geophysics, etc.)
- evaluation of **geophysical investigations** (geoelectrics, magnetics)
- **stratigraphy**

Qualified **classification** of soils and sediments.

**Foundation exploration** after applicable standards.



### Geoeecology

#### Monitoring

- **qualitative** and **quantitative monitoring** of water and gas emissions
- measurement of **chemical data** (temperature, electrical conductivity, redox potential, pH-value, etc.)
- evaluation of **water quality**
- analysis and monitoring of biological species diversity

#### Hydrology/ Hydrogeology

- sampling for hydro(geo)logical characterization of **water-courses** and **groundwater leakage**
- **river catchment analysis**



### Geotechnics

**Evaluation and mapping** of soil and sediments in accordance with applicable standards (determination of water content, consistency limits, proctor density, etc.)

**Brownfields** (after German Federal Soil Protection Law):

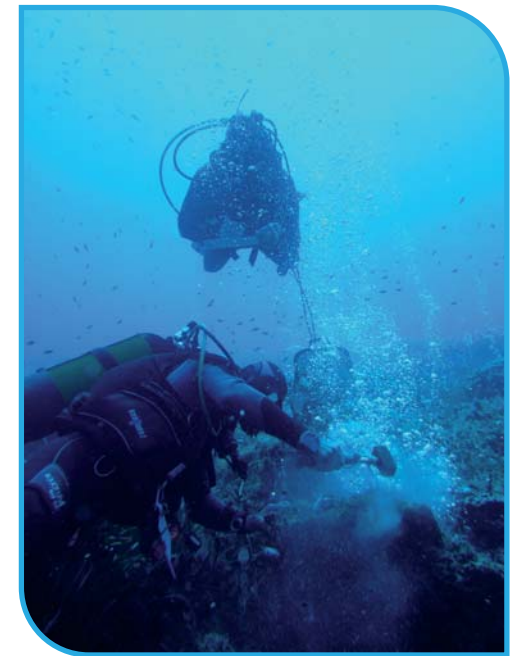
- monitoring
- sampling for (chemical) analysis
- mapping

**Laboratory and field investigation** according to DIN (proctor density, water permeability, plate-loading test, densitometer, etc.)

### Scientific Diving

All offered services can also be executed **under water**, including feasibility studies.

Moreover, we develop, design and distribute **special instruments** being engineered for underwater usage .



### Quality assurance

Each investigation comes along with a comprehensive documentation according to clients' needs.

**We ensure quality assurance by:**

- certification of our staff by CMAS International
- cooperation and international networking with specialists of diverse disciplines and subjects
- constant education and advanced training of our staff on highest scientific level
- order-related procedures to guarantee QA